

ALUMINIUM LAMINATE

Aluminio 374

A 4-ply laminated foil/film facing for interior and exterior applications

INSTALLATION INSTRUCTION

Surface Preparation

Ensure that all surfaces are dry and clean, free from dust, oil and grease/silicone. All insulation should be taped securely, giving an even surface for the Aluminio 374 application.

All adhesives work best when firmly "wetted out" to the substrate surfaces. When applying, partly peel back and crease the liner so enough adhesive is available to attach the Aluminio 374 in the correct position. Then, with a spreader, progressively remove the liner while smoothing, until the entire sheet has been applied. When applying Aluminio 374 sheet onto a continuous surface until it meets itself, 75 mm overlap is recommended to give a strong, weatherproof seal. Plan the wrap so that the edge of the sealing flap faces down.

Application to Rectangular Ductwork

On ductwork over 80 cm wide, it is recommended that the top be crowned (pitched), to allow water runoff, preventing pooling. For fast, easy application, Aluminio 374 should be applied to each of the sides separately, starting with the bottom surface, then the sides, and finally the top (Fig. 1).

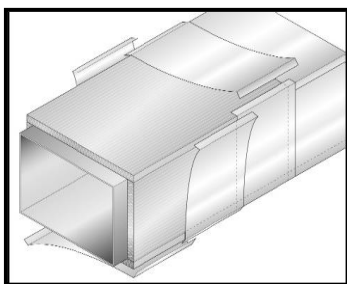


Fig.1 Pre-cut the Aluminio 374 to the required size, plus an additional overlap of 75 mm for each adjoining surface.

When applying to rectangular ductwork, apply to the bottom surface first, bringing the 75 mm overlap up, onto the sides. Next apply Aluminio 374 to the vertical surface, bringing the 75 mm overlap over onto the top surface. Finally, apply Aluminio 374 to the top of the duct, spreading toward the edges before trimming at the corners. (Fig. 2).

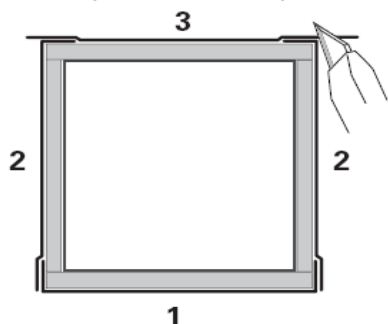


Fig.2 Application to Rectangular Ductwork.

Application to Pipe/Circular Section Ductwork

On straight pipe, cut Aluminio 374 to the desired length (pipe circumference), plus an additional overlap of 75 mm. Apply the next piece allowing a 75 mm overlap onto the previous section. (Fig. 3).

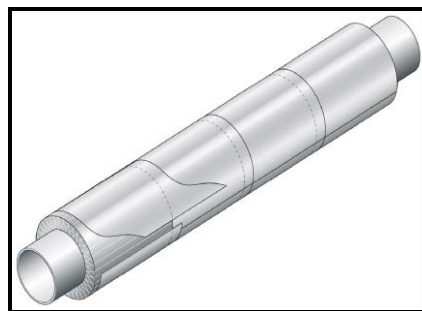


Fig. 3 Application to straight pipe.

On bends and elbow configurations, precover the pipe insulation with Aluminio 374. Cut out the required shapes to cover the segments of the bends and elbows and apply. (Fig. 4 i 5).

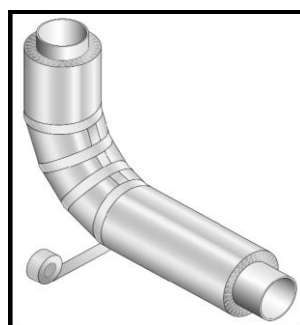
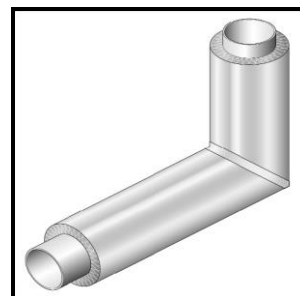


Fig.4 & 5 Insulation on bends and elbow configurations.

ALUMINIUM LAMINATE

Aluminio 374

A 4-ply laminated foil/film facing for interior and exterior applications

Application to Ductwork Reducer

Starting from the bottom, work upwards allowing an overlap of 75 mm onto adjacent surfaces. First apply Aluminio 374 to surface No.1, and overlap onto each adjoining surface.

Apply Aluminio 374 to surface No.2, and overlap onto surfaces no. 3, 4, and 5, sealing onto the overlap and trimming flush at surface No.1, to achieve a neat, secure finish.

Apply Aluminio 374 to surface No.3 in the same manner as to surface No.2, but seal onto the overlap and trim at surface No.2. Finally, apply Aluminio 374 to surfaces No.4 and 5 as with other rectangular ductwork. (Fig.6).

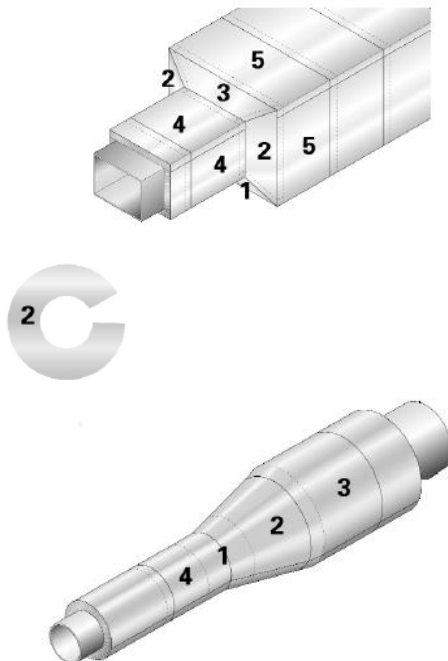


Fig.6 Insulation of ductwork reducer.

On reduced pipe, apply Aluminio 374 first to surface No.1, overlapping onto surface No.2. Cut shape No. 2, allowing for 3 inch (75 mm) overlap, and apply to surface No.2, overlapping onto section No.1. Apply Aluminio 374 to surface No.3 overlapping and sealing onto section No.2. Finally, apply to surface No.4, overlapping and sealing onto section No.1.

On "tee" sections, make appropriately configured templates of Aluminio 374, leaving a 1 inch (25 mm) overlap. (Fig.7).

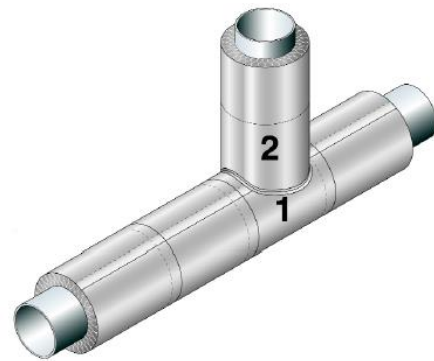
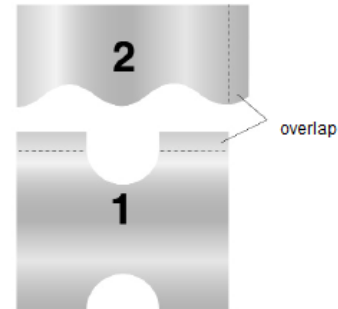


Fig.7 Insulation of T-connections.

Repair of Aluminio 374

Should damage occur, simply ensure that the surface is clean, and apply a new section of Aluminio 374 over the damaged area, to a minimum of 75 mm past the damage site. (Fig. 8).

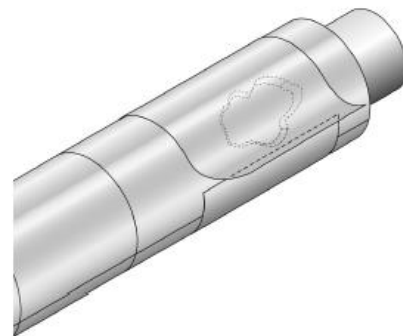


Fig.8 Repairs.